



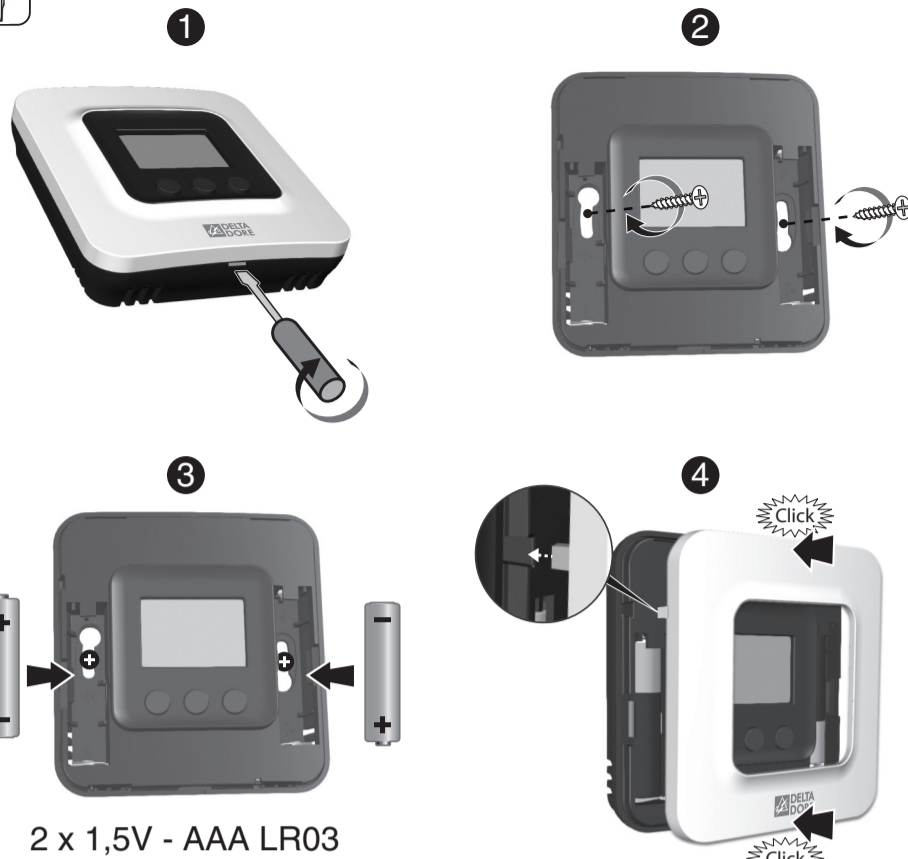
TYBOX 5100 / TYBOX 5101

www.deltadore.com

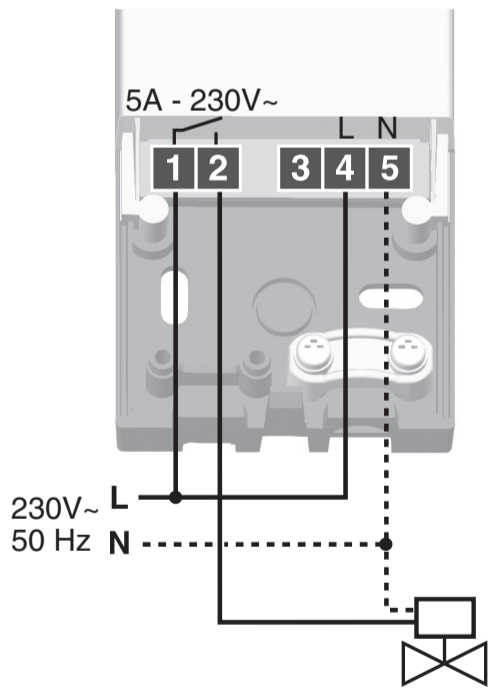
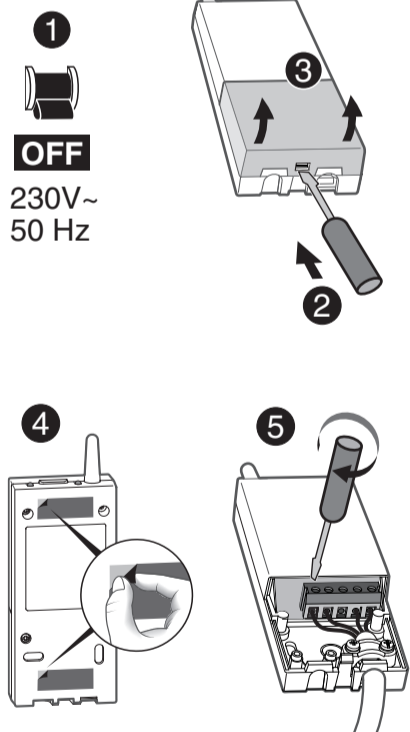
Important product information (24)



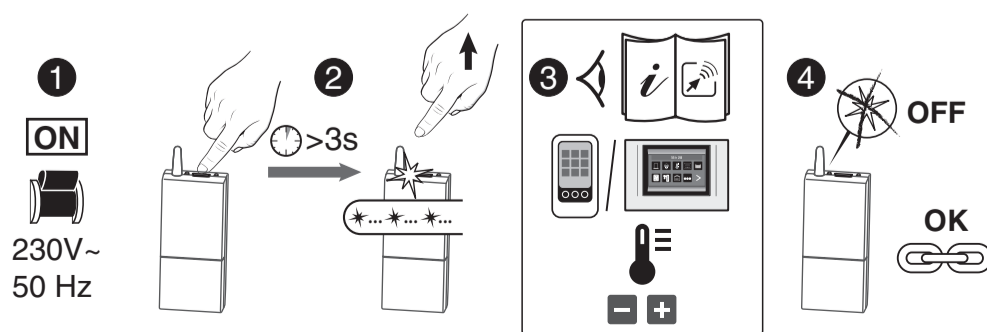
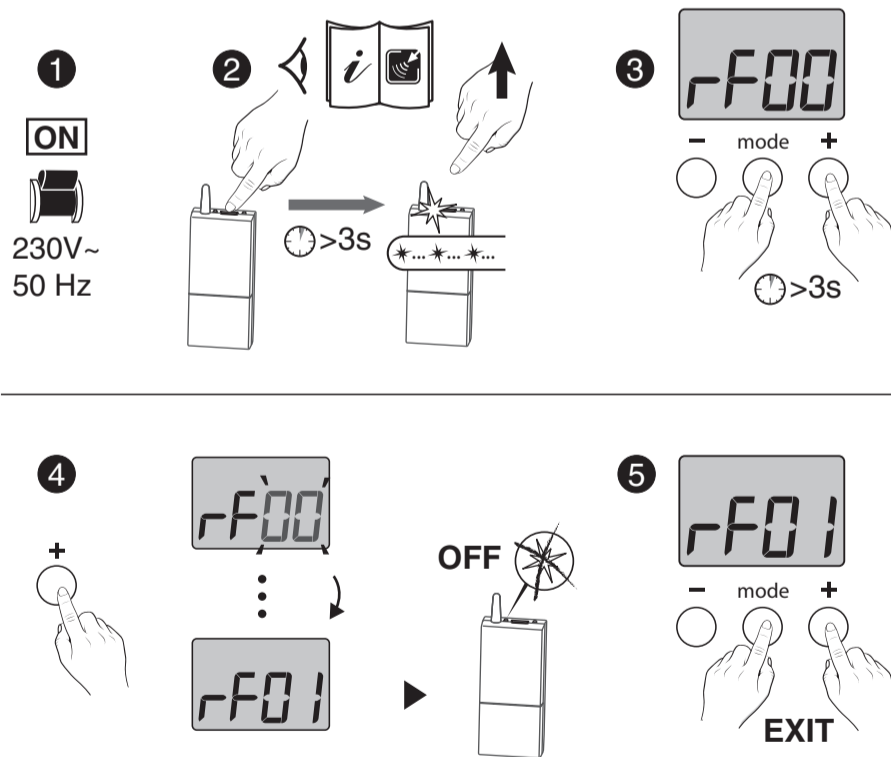
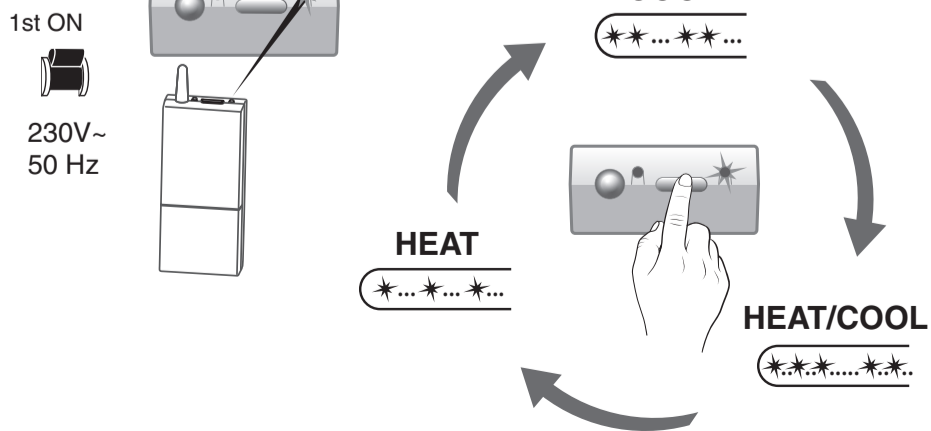
	TYBOX 5100	
	RF 6000	TYBOX 5101
	230 V~, 50 Hz - 1,8 VA	2 x 1,5V - AAA LR03
	868 MHz (EN 300 220) 100 m	
	16 max.	
°C	-5°C / +40°C	
	54 x 140 x 25 mm	80 x 84 x 21 mm
	R&TTE 1999/5/CE	
	5 A max., 230V~	/

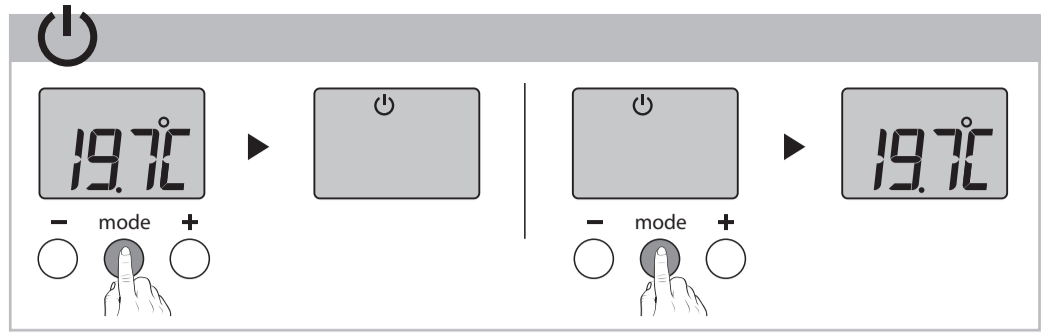
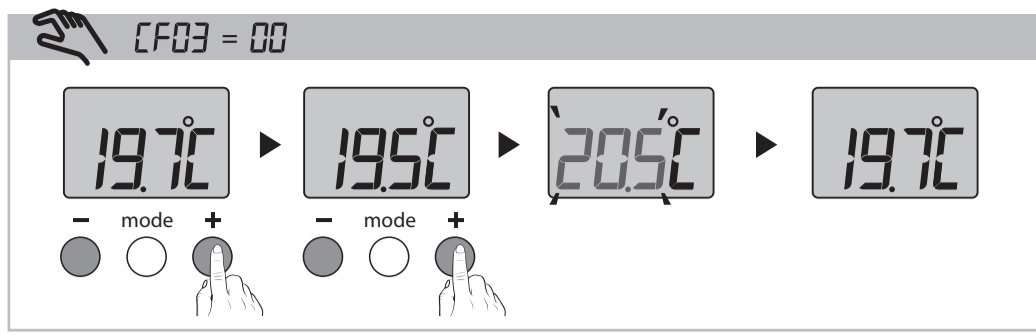


RF 6000

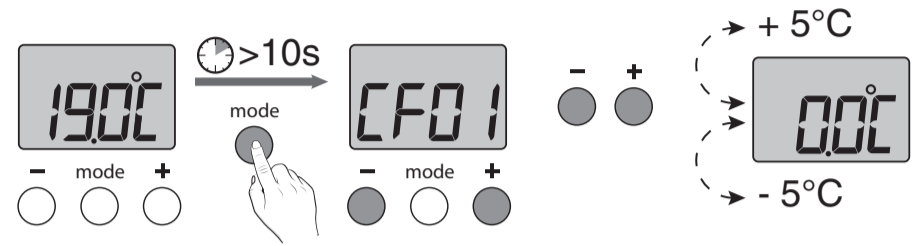


MODE : HEAT - COOL - HEAT/COOL

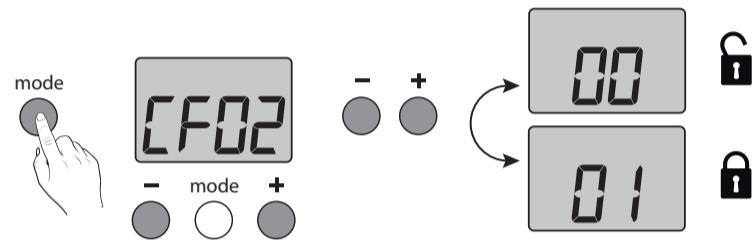




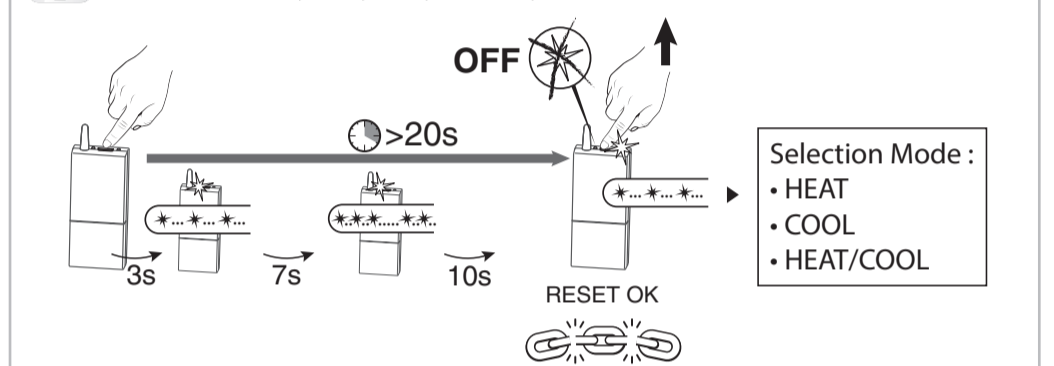
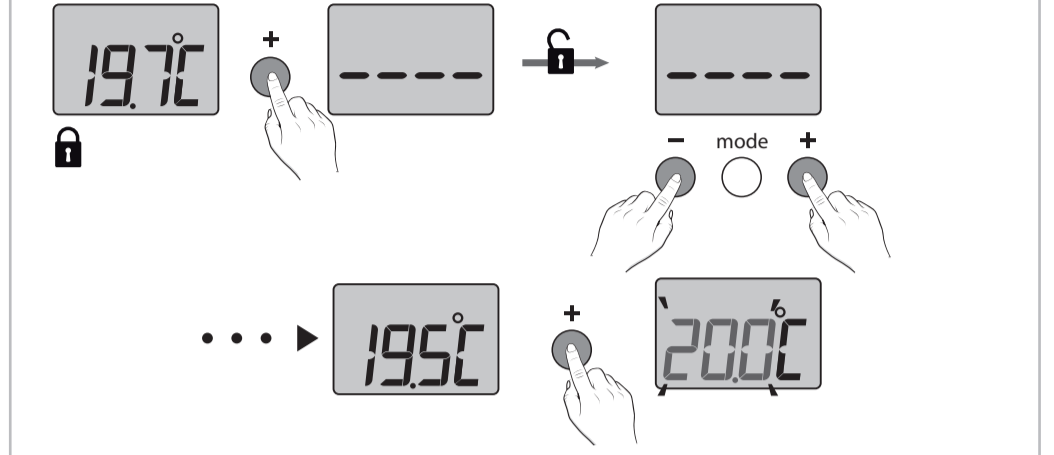
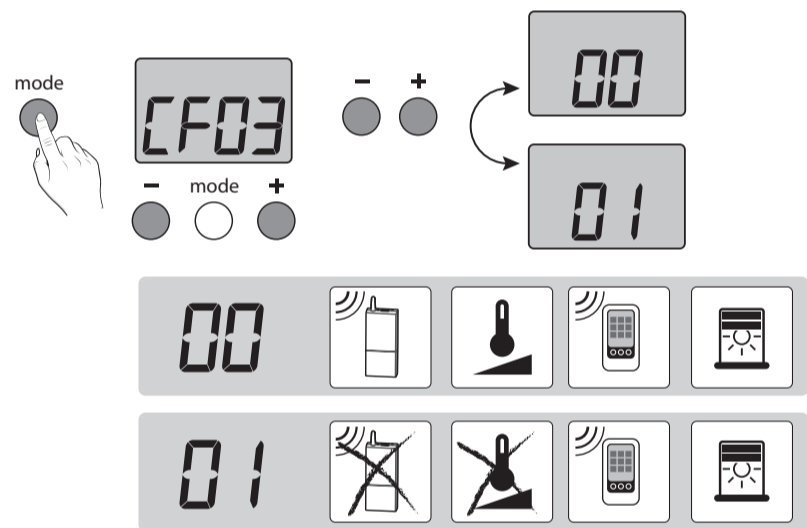
CF01 Correction de la température mesurée /
Adjustment of the current temperature



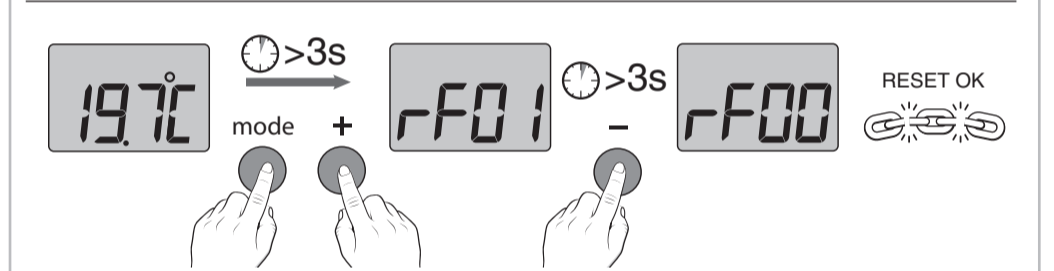
CF02 Verrouillage / locking



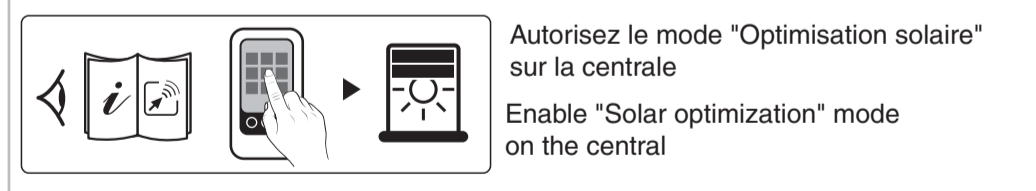
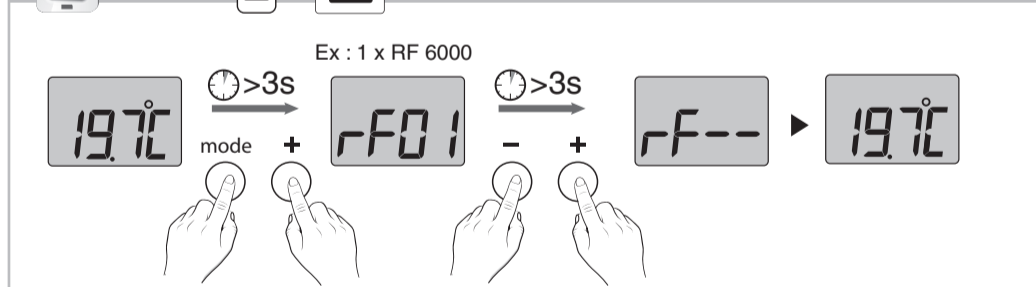
CF03 Choix du mode de fonctionnement /
Selection of operating mode



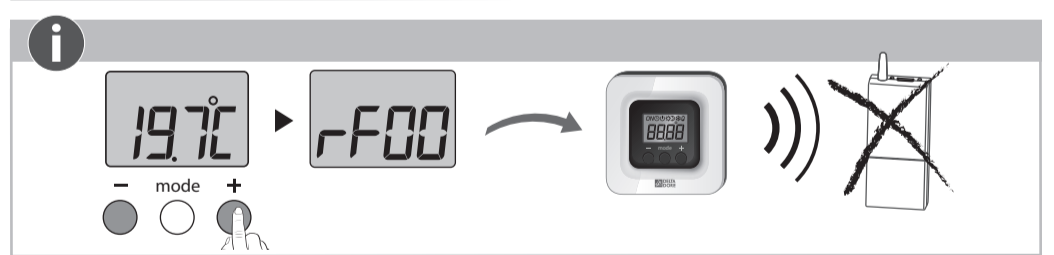
TYBOX 5100



Optimisation solaire / Solar optimization



Autorisez le mode "Optimisation solaire" sur la centrale
Enable "Solar optimization" mode on the central



Optimisation solaire / solar optimization / optimización Solar / otimização Solar /
ottimizzazione solare / Solaroptimierung / Solar optymalizacja / solaroptimalisatie /
Solární optimalizace / Solar optimering / Solar optimalisering / Solar optimointi /
太阳能优化

Récepteur / Receiver / Receptor / Receptor / Ricevitore / Empfänger / Odbiornik /
Ontvanger / Příjímač / Mottagare / Modtager / Mottaker / Vastaanotin / 接收器 /

Emetteur / Transmitter / Emisor / Emissor / Emittitore / Sender / Nadajnik / Zender /
Vysílač / Sändare / Transmitter / Sender / Lähetin / 发射器 /

Association / Association / Asociación / Associação /
Associazione / Verbindung / Przypisanie / Verbinding / Přirazení / Associering /
Tilknytning / Forbindelse / KytKentä / 连接 /

Suppression d'une association / Delete one association / Borrar asociación / Eliminar
associação / Eliminare le associazioni / Verbindung löschen / Usunięcie przypisania /
Een verbinding opheffen / Zrušit přiřazení / Ta bort associationerna /
Sletning af en tilknytning / Slette en Forbindelse / Poista kytKentä /
删除一个连接 /

Reset total / Total reset / Reset total / Reinicialização total / Reset totale / Reset /
Reset całkowity / Totale reset / Celkový reset / Total återställning / Total nulstilling /
Total nullstilling / Nollaa kaikki / 完全初始化设置 /

Clignotement lent / Slow flashing / Parpadeo lento / Intermitència lenta /
Lamppeggiamento lento / Langsames blinken / Wolne miganie / Langzaam knipperen /
Pomalé blikání / Blinking língsam / Langsomme blink / Langsomme blink / Hidas
vilkunta / 缓慢的闪烁 /

Clignotement rapide / Fast flashing / Parpadeo rápido / Intermitència ràpida /
Lamppeggiamento rapido / Schnelles blinken / Szybkie miganie / Snel knipperen /
Rychlé blikání / Snabb blinkningar / Hurtige blink / Raske blink / Nopea vilkunta /
快速的闪烁 /

Temps d'appui / Press time / Tiempo de pulsación / Tempo de pressão / Tempo
pressione / Tastendruckdauer / Czas naciskania / Druktij / Doba stisknutí /
Kopplingstid / Tid Nedtrykning / TrykKettid / Painallisaika / 按键时间 /

Voyant éteint / LED off / Testigo apagado / Indicador apagado / Spia spenta /
Kontrollleuchte aus / Lamka gaśnie /
Controlelampje uit / LED nesvítí / Lampan släcks /
Kontrolllampe slukket / Lysdiode slukket / Merkkivalo palaa /
指示灯熄灭 /