



PRODUCT SPECIFICATION

Version:

A

Date:

2020-04-07

MMD Hong Kong Holding Limited

Add: Units 1006-1007, 10th Floor, C-Bons International Center,
108 Wai Yip Street, Kwun Tong, Kowloon, Hong Kong

Rechargeable Ni-MH Battery Product Specification

Cell Model: NIMH C3000mAh 1.2V



PRODUCT SPECIFICATION

Version:

A

Date:

2020-04-07



PRODUCT SPECIFICATION

Version:

A

Date:

2020-04-07

1.Preface

This specification is suitable for the performance of the PHILIPS Ni-MH rechargeable battery.

2.Model

NiMH RTU 1.2V C 3000mAh

3.Appearance

There shall be no such defects as deformation, flaw, stain, discoloration or electrolyte leakage.

4.Nominal specification

Description(项目)		Specification (规格)	
Model (产品号)		NiMH C RTU 1.2V 3000mAh	
Size (型号)		C	
Dimensions (尺寸)	Diameter/直径(mm)	25.8+0/-1.0	
	Height/高度(mm)	50.0+0/-2.0	
	Weight/重量(g)	Approx.60g	
Nominal Voltage/公称电压(V)		1.2	
Nominal capacity/公称容量(mAh)		3000	
Internal Impedance/内阻(充满电后测量)(mΩ)		≤25	
Discharge Cut-off Voltage/放电截止电压		1.0V	
Ambient temperature 环境温度	Charge 充电	Standard/标准	0°C to 40°C
		Fast/快充	10°C to 40°C
	Discharge		-10°C to 50°C
	Storage 贮存	<1 year/年	-10°C to 30°C
		<3 months/月	-10°C to 40°C
		The relative humidity should keep with in 相对湿度必须保持在	65±20%

5.Characteristics

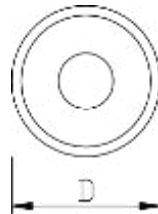
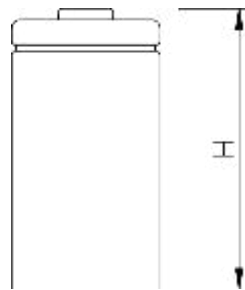
Unless otherwise specified, test: should be done within one month of delivery under the following conditions;

Ambient temperature	20±5°C
Relative humidity	65±20%
Atmospheric pressure	960±100mbar

Test item/测试项目		Condition/制度	Specification/指标
1. Charge 充电	Standard/标准	Charge at 0.1C for 16 hours 0.1C 充 16 小时	0°C to 40°C
	Fast/快速	Charge at 0.5C , $-\Delta V=0-5mV$ 、 0.5C 充电, $-\Delta V=0-5mV$	10°C to 40°C
	Trickle/涓流	(0.03C)-(0.05C)	0°C to 40°C
2. Discharge/标准放电		At 0.2C to 1.0V 0.2C 放电至 1.0V	
3. Discharge cut-off voltage 放电截止电压			1.0V
4. Capacity/容量 (mAh)	Minimum 最低	Standard charge/discharge 标准充放电	2800
	Typical 典型	Standard charge/discharge 标准充放电	3000
5. Internal resistance/内阻		After fully charge, rest 1 hour, measured at 1000Hz 充满电静置 1 小时候测试	$\leq 25m\Omega$
6. Self-Discharge/自放电		The charged battery is stored for 28 days at $20^{\circ}C \pm 5^{\circ}C$. And the discharge time is measured at standard discharge/ 充满电后电池于 $20 \pm 5^{\circ}C$ 贮存 28 天 后, 用标准放电 制度测试	Capacity $\geq 75\%$ 容量 $\geq 75\%$
7. High Rate Discharge 高倍率放电		Standard charge 1 hour rest Before Discharge by 0.5C to 1.0V/标准充电 后搁置一小时, 0.5C 放电至 1.0V	≥ 108 minutes (≥ 108 分钟)
8. Overcharge/过充		0.1C charger 28 days, /0.1C 充电 28 天	No leakage 无漏液

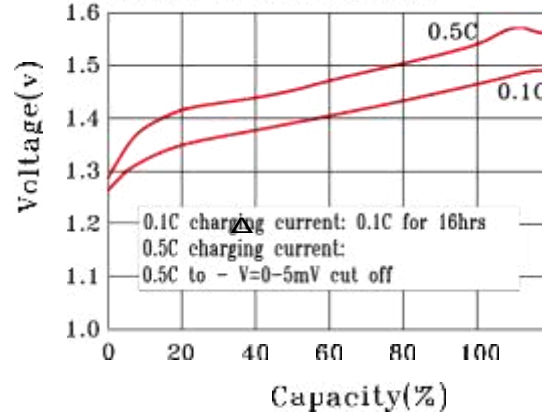
9.Cycle 循环寿命	life	按照 IEC61951-2 2003 中 7.4.1.1 项实验方法 Based on clause 7.4.1.1, IEC61951-2 2003			循环500次后容量 ≥60% Capacity retention≥60% after 500cycles
		Charge 充电	Rest 测试	Discharge 放电	
1	0.1C for 16h 0.1C 充 16 小时	0	0.25C for 2h20min 0.25C 放 2 小时 20 分		
2~48	0.25C for 3h10min 0.25C 充 3 小时 10 分	0	0.25C for 2h20min 0.25C 放 2 小时 20 分		
49	0.25C for 3h10min 0.25C 充 3 小时 10 分	0	0.25C to 1.0V 0.25C 放至 1.0V		
50	0.1C for 16h 0.1C 充 16 小时	1~4h	0.2C to 1.0V 0.2C 放至 1.0V		
Cycles 1 to 50 shall be repeated until the discharge duration on any 50 th cycle becomes Less than 3h 循环至任意第 50 次放电时间不足 3 小时为止					
10. Leakage Test 泄漏测试		Standard charge stand for 14days 标准充电后存放 14 天检查		No leakage 无漏液	
11. High temperature test 高温测试		Store at 40°C、50°C、60°C for 2 hours then charge/discharge 在 40°C、50°C、60°C 的环境下贮存 2 小时后充放电		No leakage 无漏液	
12. Low temperature test 低温测试		Store at 0°C for 2 hours then charge/discharge 在 0°C 的环境温度下贮存 2 小时后充电, 放电		No leakage 无漏液	
13. Short circuit test 短路测试		Short circuit after fully charge 充满后进行短路测试		No explode 无爆炸	
14. Drop test 跌落测试		Free fall on the concrete from 1 meters after fully charged 充满电后于 1 米高处自由跌落 3 次		No leakage No short-circuit 电池不泄漏/不短路	

6.Drawing

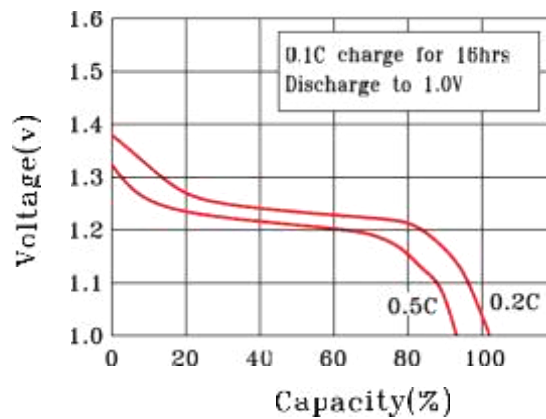


Project 项目	Description 类型	Dimension 尺寸(mm)
D	Diameter 直径	25.8 ⁺⁰ ₋₁
H	Height 高度	50.0 ⁺⁰ ₋₂

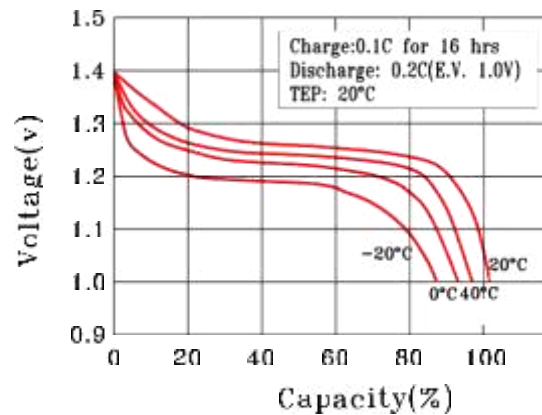
CHARGE CHARACTERISTICS



DISCHARGE CHARACTERISTICS



DISCHARGE CHARACTERISTICS AT DIFFERENT TEMPERATURE





PRODUCT SPECIFICATION

Version:

A

Date:

2020-04-07

7. Cautions in use

To ensure proper use of the battery please read the manual carefully before using it.

Handling:

- Do not expose to, dispose of the battery in fire.
- Do not put the battery in a charger or equipment with wrong terminals connected.
- Avoid shorting the battery.
- Avoid excessive physical shock or vibration.
- Do not disassemble or deform the battery.
- Do not immerse in water.
- Do not use the battery mixed with other different make, type, or model batteries.
- Keep out of the reach of children.

8.Storage

Cycle (charge and discharge) the battery every 6 month to maintain cell/battery performance, When being stored for an extended period of time.

Store the battery in a cool, dry and well-ventilated area.

9.Disposal

Regulations vary for different countries.

Dispose of in accordance with local regulations.

10.Note

Any other items which are not covered in this specification shall be agreed by both parties.

11.Period of Warranty

The period of warranty is one year from the date of shipment. TPV guarantees to give a replacement in case of cells with defects proven due to manufacturing process instead of the customer abuse and misuse.